

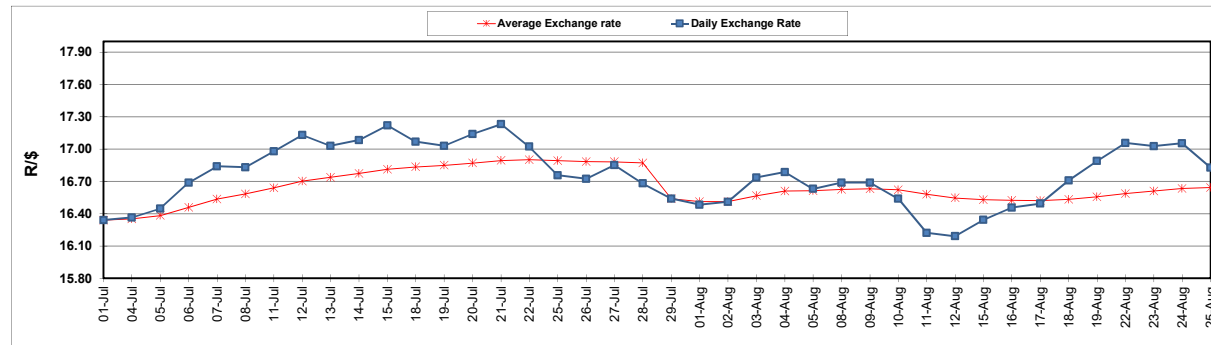
	PETROL 95 ULP	PETROL 93 ULP & LRP	DIESEL 0.05%	DIESEL 0.005%	ILL. PAR.
GAUTENG PUMP PRICE (SA c/l) AS FROM 03/08/2022	2,542.000	2,499.000	-	-	-
WHOLESALE PRICE (SA c/l) AS FROM 03/08/2022	-	-	2,452.440	2,461.840	1,842.288
SINGLE NATIONAL MAXIMUM RETAIL PRICE	-	-	-	-	2,431.000
BASIC FUEL PRICE - 25/08/2022 (SA c/l)	1,299.394	1,275.293	1,748.521	1,771.569	1,747.842
PRESS RELEASE CONTRIBUTION TO BFP 03/008/2022 - 25/08/2022 (SA c/l)	1,482.410	1,439.410	1,600.630	1,610.030	1,624.128
UNIT OVER/(UNDER) RECOVERY - 25/08/2022 (SA c/l)	183.016	164.117	(147.891)	(161.539)	(123.714)
AVERAGE BASIC FUEL PRICE 29/07/2022 - 25/08/2022	1,284.610	1,257.081	1,498.763	1,518.124	1,531.845
AVERAGE UNIT OVER/(UNDER) RECOVERY 29/07/2022 - 25/08/2022	228.850	213.379	126.317	116.806	113.883

ANALYSIS MOVEMENT OF AVERAGE OVER/(UNDER) RECOVERY

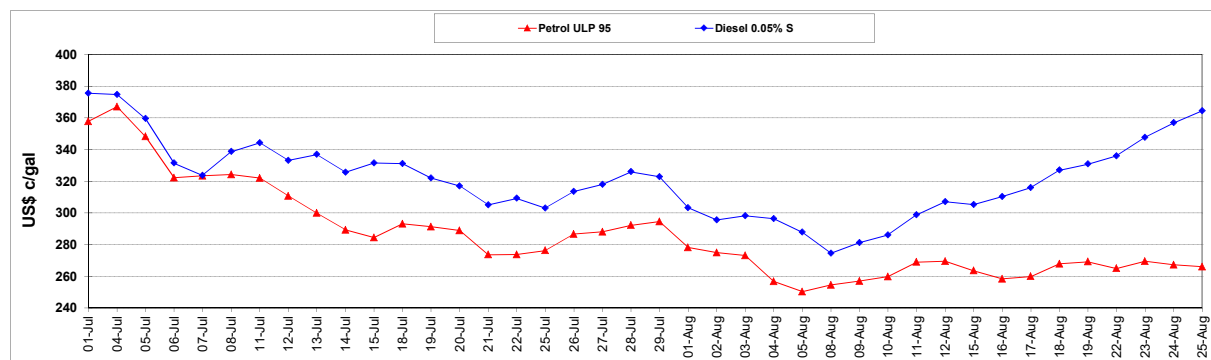
	PETROL 95	PETROL 93	DIESEL 0.05%	DIESEL 0.005%	ILL. PAR.
- MOVEMENT IN INTERNATIONAL PRODUCT PRICES	211.166	196.074	105.685	95.908	92.796
- MOVEMENT IN EXCHANGE RATE	17.684	17.305	20.632	20.898	21.087
AVERAGE UNIT OVER/(UNDER) RECOVERY 29/07/2022 - 25/08/2022	228.850	213.379	126.317	116.806	113.883

R/\$ EXCHANGE RATE - (R/\$16.8275 - 25/08/2022)

EXCHANGE RATE USED IN BASIC FUEL PRICE



INTERNATIONAL PRODUCT PRICES OF BASKET USED IN BASIC FUEL PRICE



BASIC FUEL PRICE IN SA CENTS PER LITRE

